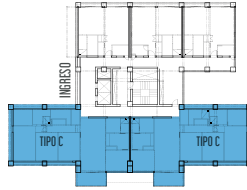




# DISPONIBILIDAD ENERO 2018 TORRE AIRE

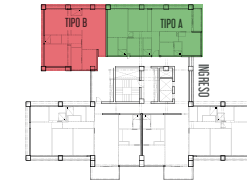


● TIPO C

● VENDIDO

● APARTADO

○ DISPONIBLE



● TIPO A ● TIPO B

TIPO C			
121	190 m <sup>2</sup>	\$6,450,000	122
111	190 m <sup>2</sup>	\$6,425,000	112
102	190 m <sup>2</sup>	\$6,375,000	103
92	190 m <sup>2</sup>	\$6,300,000	93
82	190 m <sup>2</sup>	\$6,225,000	83
72	190 m <sup>2</sup>	\$6,150,000	73
62	190 m <sup>2</sup>	\$6,125,000	63
52	190 m <sup>2</sup>	\$6,100,000	53
42	190 m <sup>2</sup>	\$6,075,000	43
32	190 m <sup>2</sup>	\$6,050,000	33
22	190 m <sup>2</sup>	\$6,000,000	23
13	190 m <sup>2</sup>	\$6,250,000	14

TORRE MAR

TORRE AGUA

— PISO 12 —  
— PISO 11 —  
— PISO 10 —  
— PISO 9 —  
— PISO 8 —  
— PISO 7 —  
— PISO 6 —  
— PISO 5 —  
— PISO 4 —  
— PISO 3 —  
— PISO 2 —  
— PISO 1 —  
— MEZZANINE —  
— PLANTA BAJA —

TIPO A		TIPO B	
101	110 m <sup>2</sup>	\$4,275,000	100
91	110 m <sup>2</sup>	\$4,250,000	90
81	110 m <sup>2</sup>	\$4,225,000	80
71	110 m <sup>2</sup>	\$4,200,000	70
61	110 m <sup>2</sup>	\$4,150,000	60
51	110 m <sup>2</sup>	\$4,125,000	50
41	110 m <sup>2</sup>	\$4,075,000	40
31	110 m <sup>2</sup>	\$4,025,000	30
21	110 m <sup>2</sup>	\$3,975,000	20
12	82 m <sup>2</sup>	\$3,150,000	11
11	73 m <sup>2</sup>	\$2,950,000	10
10	73 m <sup>2</sup>	\$2,950,000	9
3	82 m <sup>2</sup>	\$3,150,000	2
2	73 m <sup>2</sup>	\$2,950,000	1
1	73 m <sup>2</sup>	\$2,950,000	0
PB1	110 m <sup>2</sup>	\$3,950,000	PB2

TORRE AGUA

TORRE MAR

LOFT

\*Precios sujetos a cambio sin previo aviso.